

# *The Distributor*

*Orange County Model A Ford Club*

*Model A Ford Club of America*

*Chartered August 1961 – Santa Ana, California*

Editors: Peter & Ana Hyland

Email to: [newsletter@ocmafc.org](mailto:newsletter@ocmafc.org)

November 2008 Volume 48 Number 11

Website: <http://www.ocmafc.org>

---



## 2008 BOARD MEMBERS

### President—Mark Schwing

714-970-1696  
mschwing@earthlink.net

### VP/Activities—Don Miller

562-431-6494  
donfmiller1@verizon.net

### Secretary—Jeanne Parrish

714-999-0611 jprp60@aol.com

### Treasurer – Colleen Schmidt

714-524-2659  
dt\_schmidt@sbcglobal.net

### Technical—Don Ratzlaff

714-529-5062  
wadedon@pacbell.net

### Editors – Peter & Ana Hyland

714-633-5797  
newsletter@ocmafc.org

### Immediate Past President

Don Miller 562-431-6494  
donfmiller1@verizon.net

## COMMITTEES

### ACCC Representative-

Larry Conkol 714-535-1411

### Breakfast Committee-

Terry Collings 714-970-7194

mtcollings@sbcglobal.net

### Club Greeter-Doris Marshall

310-378-5061 dandd51@gmail.com

### Election Chairperson-

Kathie Mc Call 714-633-0946

dkmccall@socal.rr.com

### Historian & Librarian-

Richard Parrish 714-999-0611

rcp1937@aol.com

### Merchandise Director

Gary Discher 714-996-1970

Coupon-queen@sbcglobal.net

### Pancake Breakfast setup &

Coordination-Mark Schwing

714-970-1696

mschwing@earthlink.net

Raffle-Tissy Hatcher-714-546-8554

Gail Perlmutter-949-388-2815

### Refreshments-Chris Foster

562-987-2225

### Regional Representative-

Bev Marsh 714-373-9769

onebootscooter@yahoo.com

### Scholarship--Dorothy Knox

562-697-2545

knoxbox59@aol.com

### Sunshine & Sorrow

Jeanne Parrish

714-999-0611 jprp60@aol.com

### Swap Meet-Larry and Gerry

McKinney 714-963-2724

lgmspeed@verizon.net

### Web Master-Chris Enright

949-481-8780

webmaster@ocmafc.org

### Web Site Info Entry-Les Lewis

949-916-6622

## Notes From Your President Mark Schwing. . .



November 2008

### President's Letter

OCMAFC was invited to be the national MAFCA election ballot counters at the La Habra headquarters this past month. Thanks and kudos to the following club members who participated: Richard & Jeanne Parris, Don & Colleen Schmidt, Don & Carolyn Ratzlaff, Dale & Kathie McCall, Pete Hyland, Tom Endy, Bev Marsh, and myself. It was an interesting inside view of how the ballots are counted, recounted, sometimes counted a third time and then tallied. The final results will be announced when the new board is announced at the annual MAFCA membership meeting and installation banquet in Mesa, Arizona on Saturday December 6<sup>th</sup>. The four day event begins on Wednesday, December 3<sup>rd</sup>. A number of our members will be attending the event.

Speaking of installation banquets, we have another great one planned for the club on Sunday, December 14<sup>th</sup> at the Claim Jumper in Fountain Valley. This is the same location as last year. The club will be underwriting a portion of the costs so we hope to see as many of you there as possible. This is an evening of great food, good friends and good holiday spirit.

Tom Endy has proposed that we consider retiring the Hard Luck trophy with the idea that the trophy prevents people from really talking about their Model A problems and most importantly about the solutions to these problems. What do you think? We will discuss this at our November membership meeting.

As some of you already know, I was asked to run again this year for the Yorba Linda City Council. I served previously from 1988 until 2000. If any of you have ever campaigned for an elected office, you will know just how much time it takes. Everyday I'm scheduled to be somewhere from the farmer's market, to standing in front of supermarkets or just walking door to door in residential neighborhoods. Late evenings are spent putting out more signs. My six day interruption in mid-October for a major trade show with my business and its twelve hour days felt like a vacation. As I write this column there are just five days left to election day and I have no idea what the ballot results will be. There are nine candidates including two incumbents for three seats.

I hope you all exercised your constitutional right and obligation and voted November 4<sup>th</sup>. I always tell those who don't vote, that they have lost their right to complain about the government.

## LET'S KEEP DRIVING THOSE MODEL A's!!!

### This Month's Cover



Another collage in the series taken at the Pancake breakfast earlier this year by Wade Ratzlaff and Corrie Amsden





## Activity Schedule

Don Miller

Donmiller1@verizon.net

(NOTE: \* = UPDATED INFORMATION)

✓ **Deadline for next *Distributor* is:**

**November 30, 2008**

Type or write all articles and ads and e-mail to:  
**newsletter@ocmafc.org or prhyland@att.net**

Or mail to: 244 No. Goldenspur Way,  
Orange, CA 92869-4422

### NEXT MEETING DATE

**November 13, 2008**

**7:30 PM**

**\* Indicates Change**

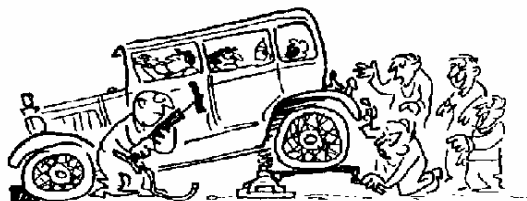
### 2008/2009 TOUR/ACTIVITIES CALENDAR

#### **Nov 13 (Thurs) White Elephant Auction**

Carl Erickson has agreed to be the auctioneer at our annual Shoe Box Auction. Bring items that you are willing to donate to the club as all proceeds go to the club. Because we only have a limited time for the auction, please bring items with a reasonable value so we don't spend too much time on .25 or .50 cent items. Model A parts are highly valued.

#### **Nov. 13-16 (Thurs-Sun) Palm Springs Follies.**

We have reserved the pool side rooms again this year at the Royal Sun Motel 760-327-1564. Follies tickets are \$49.00 each. Make checks out to OCMAFC. We will leave from Denny's at Tustin and Lincoln at 9:30 on Thursday. Also, if anyone has a suggestion for a tour on Friday or Saturday let me (Don Miller) know.



#### **Nov 22 (SAT) Model A Driving**

**Opportunities for You** (as in either gender) to be held at CHOC starting at 9:30 AM. Please see Don's Technical write up on Page 4 and sign up for this seminar. If you are not sure how to drive a Model A then this is for you!!



**Dec 14 (SUN) Installation Banquet** Will be at the Claim Jumper Restaurant in Fountain Valley. Please see the flyer on Page 10 for all the details.

#### **Jan 17 (SAT) Tour to historical Union Station in Los Angeles.**

We will use mostly surface streets so bring your **A** or it's not running we encourage you to bring your modern iron. Details later from Bev Marsh.

**April 2-5, 2009 Laughlin Meet**----Save the date!!! Details will follow as soon as possible. Flyer will be at the next club meeting

### **SWAP MEETS**

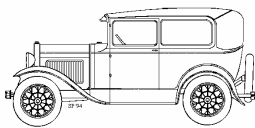
**Nov 9 (SUN) Long Beach Swap Meet at Veterans Stadium**

**Nov 31 (SUN) Long Beach Swap Meet at Veterans Stadium**

**Dec 14 (SUN) Long Beach Swap Meet at Veterans Stadium**

**Jan 24<sup>th</sup> & 25<sup>th</sup> (SAT-SUN)-Modesto Area A's 43<sup>rd</sup> Annual Swap Meet**

at the Stanislaus County Fair Grounds For more information please see their web site at [www.TurlockSwapMeet.com](http://www.TurlockSwapMeet.com).



## OCTOBER TECH SESSION

The October Tech session attracted quite a crowd, perhaps 25 attendees. I guess you could refer to them as the “Jet Set” since most brought Zenith Carburetor Jets for testing. The test procedure involved the following: (a) measure and record a baseline flow rate in ml/min. If the flow rate was outside of specification then (b) solder the orifice shut and re-drill to the proper size, (c) measure and record the retest value of flow rate. Repeat step b and c until the measured flow rate meets specification. The session was held at Tom Endy’s garage. Tom and Wayne Wiedle each provided a test station designed for flow testing the “four” carburetor jets. Having two stations reduced the wait times for the “jet set” members and the process went smoothly. The donut demolition activities were a wonder to behold, hardly a crumb was left. All in all it was a good session, no 9-11 calls were made and most members left with a known “good” set of carburetor jets.

## NOVEMBER TECH SESSION

The November tech session will be a two day commitment, focusing on providing Model A driving opportunities for you (as in either gender). The question being addressed is: Are you prepared to drive your Model A in the case of a necessity? A Saturday morning session will concentrate on familiarization with operating controls/procedures, i.e. spark and throttle levers, choke and fuel mixture adjustment, double clutching, starter pedal, ampere and gas gauge and shifting patterns. It is anticipated that actual “starting” of the Model A will also be practiced. The Saturday session will meet at CHOC, room TBD, at 9:30am on 22 November. The Model A parking will be on the upper deck to avoid any issues with exhaust fumes.

The second session will focus on driving the Model A, involving starting, double clutching, downshifting, braking, parking and backing. Whether this session should be held the very next day (Sunday) or a week later will be discussed with the participants. A Sunday session is preferred since vacant parking lots are available and street traffic is minimal. Possible locations are the parking area behind the Orange Mall, Craig Regional Park or the industrial area in Brea just west of the intersection of Birch Street and Valencia Avenue. Maps and planning will be provided at the Saturday session.

**TECHNICAL CLUE (for those of us that don’t have a clue!) Reprinted from the “Aug 08, Action ‘A’ Newsletter”, Phoenix Model A Club**

## **AR A’s in Model “A” Ford; by Jim Langley** **“River Cities Running Board” 6/08**

In reviewing a recent issue of HEMMINGS MOTOR NEWS, I saw a classified ad for a “1928 Ford Model AR”. Believe me, no such animal ever existed. Like the now worn-out terms “Classic Car” and “Rare,” AR was never a body style for the 1928 Ford. YES, there are classic cars, and YES, there are rare automobiles, BUT a 1966 Buggymobile is not a classic, and just anything over two days old is not rare. The same logic applies to the term “AR”...

How it all started: The letters AR first appeared in Ford Parts Price List for Model A and AA, dated Oct. 1, 1928. Ford chose to add those letters as a suffix to part numbers to designate the part had been made obsolete as a result of a design change or modification. As an example; part number A-1015 had changed to A-1015-B and then to A-1015-AR; indicating that the original wheel design had been made obsolete. Of course, as we well know, obsolete parts were not scrapped either at the assemble plants or in the field and AR parts were intended to be used until the supply was exhausted. SO ...AR simply means AFTER REDESIGN...

So how did these myths of a so-called AR model begin? Many years ago some of the early restorer’s were finding many changes between the early ‘28s and the cars which came later, and again we also know there were many changes both during pre-production and early production. “SOMEONE” compared these differences listed in the Model A and AA Parts Price List and coined the term AR model. Other Model A researchers such as Dr. Hans Kalinka (better known as Doc Kalinka) who, for many years wrote “AUTHENTICALY SPEAKING” in MODEL A NEWS and, was quite an authority on the early Model A’s tried to put these myths to rest referring to the early changes as E28. I too prefer this designation... NO WHERE in any Ford literature other than the Parts Price List will you find “AR”. I am not from Missouri, but I did stay in a Holiday Inn Express in St. Louis once. SHOW ME!!! In truth, if you had a 1928 Ford Model AR, then your car would have been entirely assembled .-from obsolete parts: NEVER HAPPEN!

## **OCMAFCA General Meeting**

**October 9, 2008**

**Submitted by Jeanne Parrish**

Meeting was called to order at 7:30 PM, with flag salute, by President, **Mark Schwing**.

**Greeter:** **Doris Marshall** welcomed guests **Phyllis & Steve Ribeau**, members of Sonoma A's & friends of **Jeanne & Richard Parrish**, **James Cathey**, (1931 pickup), **Wayne Switzer**, (1931 coupe), **Doug Mason**, looking for a Model A and member **Martie Wiedle**, whom we hope to see more of since she is a retired lady now.

Minutes of the September meeting were corrected as follows: **Mark Schwing** will head the Youth Restoration Award/Fund for 2 years, taking over the position of **Charlie Viosca**. Minutes were then approved as corrected.

**Sunshine & Sorrow:** **Jeanne Parrish** asked for cards and prayers for members **Dick Nordin**, ill with cancer, and **Reba Pearce**, recovering from a long illness.

**Treasurer:** **Colleen Schmidt** gave the report and announced the profit made from the Pancake Breakfast. Also, renewals for 2009 membership are coming in via mail. The books are always open for members' review. **Colleen** read a note from **Gerry McKinney**, thanking **Bev Marsh**, **Sheila Plotkin**, and **Gary Discher**, for their help on the Swap-meet.

**Activities Director:** **Tom Endy** gave report on the Palm Springs Follies tour, Nov. 13<sup>th</sup> - 16<sup>th</sup>. He also read the itinerary for a trip to Hawaii, (Big Island), June 26<sup>th</sup> - July 5, 2009, with our cars being shipped over there and touring the island with members **Patti/Bob Ferazzi** and past members **Wayne/Jocelyn Krug**. There will be no pumpkin tour this year. **Don Miller** announced the Progressive Brunch, Sat. Oct. 25, 10:00 AM. **(Please see Calendar of Activities/Tours in the Distributor.)**

**Mark Schwing** announced the "White Elephant" Auction will be postponed until after the first of the year.

**Editor:** **Mark** announced **Pete Hyland** will receive another award for his excellent newsletter. **Pete** said he has extra newsletters for the month and please update your information in the roster for 2009. **(Deadline for November issue is Thursday, Oct. 30<sup>th</sup>.)**

**Terry Collings** announced the Fourth Thursday Breakfast will be at Alice's in the Park, at 8:30 AM in Huntington Beach...

No reports for Scholarship Committee and SCRG.

**Technical Director:** **Don Ratzlaff** would like to try something new with car repair. An H-Team, ("H" being for Help), would be formed. Would need some experts, in several areas of Model A repair, to help work on members' cars. He will pursue this idea further.

A Ladies Driving Seminar is in the plans for the future. **Paul Steed** said his garage will be open, beginning next week, for members needing/finishing fender repairs. **Don** is still in need of several members' pictures for the online roster. See **Don** or **Lew** regarding this matter.

**Election Chairperson:** **Kathie McCall** asked for more nominees for upcoming election of officers. She has a slate of candidates for President, Vice President/Activities, Secretary, and Treasurer. Ballot will be in the Nov. issue of the Distributor.

**Chris Foster** thanked **Doris Marshall**, **Sally Miller**, and **Jeanne Parrish** for refreshments this month.

Meeting adjourned 9:05 PM.

### **2009 Dues**

Membership dues for 2009 are now due and payable and we urge that you remit as soon as possible to your Treasurer.

**Also, please take this opportunity to check your Roster listing so that it reflects your information accurately such as address, telephone number, e-mail etc.**

Thank you very much for your early remittance!!

# Angels Flight

by Tom Endy

Angels Flight was an inclined railway built in 1901 at 3<sup>rd</sup> and Hill Streets in downtown Los Angeles. It can be seen just to the left of the 3<sup>rd</sup> Street tunnel. Its very useful purpose was to transport people from the city below to the top of Bunker Hill where many of the city's fashionable Victorian mansions were located. Originally the cost was 1¢ for a one-way, one-minute ride. In 1914 it was raised to 5¢.

By 1969 most of Bunker Hill had become derelict and the city fathers initiated a redevelopment plan for the area. The Victorian mansions were torn down and Angels Flight was dismantled and placed in storage with a promise from the city council that one day it would be restored to service. Twenty-seven years later in 1996, after much prompting from the citizenry, Angels Flight was resurrected, but located further down Hill Street near 4<sup>th</sup> Street.

The reconstructed Angels Flight had no real purpose and became little more than a curious tourist attraction that could hardly support itself at 25¢ for a one-way ride. Much of its historical significance was lost since it was no longer in the original location. After a few years of service the first-ever fatal accident occurred on the ride and the city council shut it down. Today it sits inactive near 4<sup>th</sup> and Hill Streets as an insignificant relic of the past. ☺



Hill and 3<sup>rd</sup> Streets in the 1890's, before construction of Angels Flight and the tunnel



Hill & 3<sup>rd</sup> Streets about 20 years after construction of Angels Flight and the tunnel



Hill & 3<sup>rd</sup> Streets in the 1970's after demolition and removal of Angeles Flight was complete



Hill and 3<sup>rd</sup> Streets in the 1980's, the 3<sup>rd</sup> Street tunnel is now under a building.

# Historian VIII

By Richard Parrish

## *The Restorer and MAFCA*

*The Restorer* came into being when SoCal was just a local club. Its popularity soared. Subscriptions were sold throughout the country and did not indicate membership in any particular club.

*The Restorer* became the official newsletter of the newly formed MAFCA in fall of 1957. It was announced in the Sept/Oct 57 issue that those with subscriptions to *The Restorer* became *members* of MAFCA at no additional cost, which was then \$3.00 per year.

The famous Coupe profile became the MAFCA logo. Name badges and decals became available. Ads for Model A parts houses, reprints of *The Restorer* and technical books started appearing throughout the magazine. Tiny tips, by Tiny Snell became a regular feature. It's interesting to note that *How To Restore Your Model A* book was already in existence and had been printed as a series in the magazine. Volume 2 was starting with installments in future issues.

A couple of notable members at that time were Tennessee Ernie Ford and Gordon Buehrig, famed automotive designer for Duesenberg, Auburn and Cord.

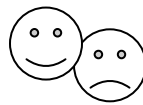
The first mention of chapters showed up in the March/April 1958 issue. They were the Bakersfield chapter, the Edwards Air Force Base Chapter, the North Jersey chapter and the Delaware Valley Chapter.

There had been two feature articles about unique custom built Model A's in 1930. I will reprint them if I get approval from MAFCA. One is the customized personal car of Gordon Buehrig and the second is the custom duel cowl Phaeton built for Edsel Ford by LeBaron.



**My \$10.00 Model A Roadster in 1957**

*Agent Orange*



## *Sunshine & Sorrow*

By Jeanne Parrish

A big "Thank You" to our host couples for the Progressive Brunch. Chris Foster and Everett, in Long Beach, Marion and Dick Miller, in Anaheim, and Susan and Ed Heins, in Huntington Beach, for dessert. If you did not make this one, you all missed a good time and great food with Model A friends.

We sure missed Gwen & John Riggs at the Progressive Brunch. It seems Gwen is a bit "under the weather". As you all know they are such troopers when it comes to Model A affairs, we are hoping to see them again, real soon.

Please keep members Dick Nordin and Reba Pearce in your thoughts and prayers. We sure miss seeing them and hope it will not be too long before they can once again join us. We are also thinking about Vince/Joan Mariola, Dan/Sylvia Adelman, and Pete/Trish Cruz.

Our sincere condolences to long time member Bob Hawkins. Wife and mother, "Lorrie" Hawkins passed away on October 12th after a long heroic battle with cancer. Thoughts and prayers go out to their five daughters Pam, Beth, Cathleen, Melissa, Katie and son, Doug.

## **A Special Request for Roster Pictures**

An effort is being made to collect pictures of OCMAFC members for inclusion into the Web Site (www.ocmafc.com) Roster listing. The membership is being asked to provide a picture of "themselves" (having their model A in the background, if possible). The picture should be emailed to Don Ratzlaff at [www.wadedon@pacbell.net](mailto:www.wadedon@pacbell.net). If computer access is not available, "the picture" should be mailed to:

**Don Ratzlaff**  
**1713 Lark Ellen Dr.**  
**Fullerton, CA 92835**

Pictures that are mailed will be scanned in and returned ASAP unless otherwise instructed.

Arrangements can be made to have your picture informally taken by calling Don Ratzlaff to set up a time and place.

All images will be digitized, cropped, resized and labeled so as to provide a consistent format for Lew Lewis to post on the website roster. Currently there are approximately 40 member photographs posted in the roster for your viewing. Why not take a look to familiarize yourself with the option?

**Note:** The website roster is secured via a "user-name" and "password". Access to the user-name and password can be obtained by contacting either Lew Lewis ([hglewis@cox.net](mailto:hglewis@cox.net)) or Don Ratzlaff ([www.wadedon@pacbell.net](mailto:www.wadedon@pacbell.net)) via E-mail only. By receiving an E-mail from you

we can verify that is really you and we will send back the "User name" and "Access Password". Either "click" on our highlighted E-mail addresses or Please see the information posted in your printed copy of the 2008 roster.

Thanks for your help in populating the roster

## **Bits and Pieces**

### **New Members**

#### **Dennis Baker**

706 ½ begonia Avenue  
Corona del Mar, CA 92625  
H: (949) 675-2199  
Cell: (949)-274-3226  
e-mail: [Dennis.Baker@spancop.net](mailto:Dennis.Baker@spancop.net)  
1930 50-B Sport Coupe

#### **Gary & Ronda Chambers**

17521 Jefferson Lane, #A  
Huntington Beach, CA 92647  
H: (714)-315-4132  
W: (714)-315-4113

#### **Joe & Esther Goff**

25081 Whitespring  
Mission Viejo, CA 92692  
H: (949) 768-4627  
Cell: (949) 636-3879  
W: (714) 832-4633  
Fax: (949) 768-0552  
1929 45-A Coupe

**Welcome to all**



# A Power Inverter!

by Tom Endy

## 6-volt positive ground:

The Model A Ford was designed and built with a six-volt positive ground electrical system. It has for many years served the car well and will continue to do so. However, many Model A owners have converted to a 12-volt negative ground system for various reasons. This is a matter of personal choice. To make the conversion one must replace the battery, the generator (or alternator), the ignition coil, and all the light bulbs. A dropping resistor will be needed for the ahooguh horn, and it would be prudent to change the starter to a 12-volt version, however, a six-volt starter will work on 12-volts.

## Personal thoughts:

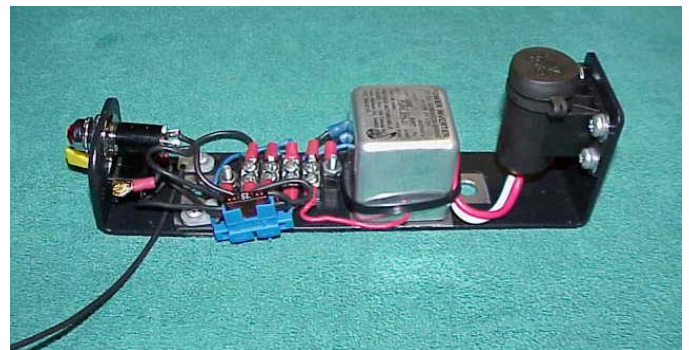
If I were starting from ground zero with a Model A restoration I would definitely convert it to 12-volts. Since I would have to buy a battery, alternator, ignition coil, starter, and all the light bulbs, the cost would be about the same regardless of which I chose, 6 or 12 volt. The advantage of the 12-volt system would be that I could recharge my cell phone and operate a portable GPS system while on a tour. I would also be able to replace a failed alternator on a tour by going to most any auto parts store. It would be difficult to obtain a 6-volt positive ground alternator while on a tour.

## An alternative:

My Victoria already has a 6-volt positive ground electrical system and because I did not want to go to the expense of converting it, I found an alternative solution. Bratton sells a device called an inverter that will provide a low power 12-volt negative ground voltage from a 6-volt positive ground system that is capable of operating a cell phone, and a GPS. Bratton actually stocks two types. One has a 1.2 amp output that will support a cell phone or GPS (\$70); the other has a 2.5 amp output that will support a radio or tape player (\$100). I selected the 2.5 amp unit. The inverter is very small, just one and three quarter inches square. It uses a common ground for both input and output. The unit is grounded to the chassis and there is one lead for a negative 6-volt input, and one lead for a positive 12-volt output.

## The installation:

A power outlet of the “cigarette lighter” type was obtained from an auto supply store. The inverter and the power outlet were attached to a homemade bracket that fits up under the dash rail on the passenger side of the car. It mounts to two existing bolts five inches apart. An off-on switch controls the inverter and a power on lamp was included to indicate power on. Both the inverter and the power outlet are pretty much out of sight. I now have the ability to power my GPS and recharge my cell phone while rolling down the road in my 6-volt positive ground Vic.



The complete assembly is shown above. The inverter is the square looking device in the center. The power outlet is to the right. The power outlet points straight down when installed under the dash rail. A single wire runs from the terminal strip to the negative 6-volt battery voltage. The power switch and the indicator lamp are to the left. The entire assembly is grounded by virtue of mounting it under the dash rail.



Shown above is the entire assembly installed under the dash rail on the right side of the car and ready for use. ☺

Reprinted from Victoria Association newsletter, “The Bustle”. Thanks!!!!

# **Orange County Model A Ford Club Annual Installation/Awards Banquet**

**When:** Sunday, December 14, 2008

**Where:** Claim Jumper  
18050 Brookhurst St.  
Fountain Valley 92711  
714 963-6711

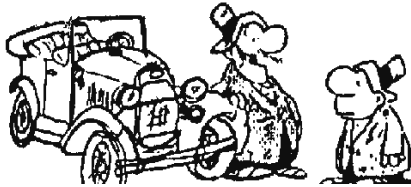
**Time:** 6 Pm No Host Bar  
7 PM Dinner

**Filet Mignon, Salmon or Veggie Platter**  
Spinach Salad, Baked Potato, Dessert  
Coffee, Ice Tea, Soda  
\$25.00

- **Sign up at the November meeting**
- **Indicate entrée choice**
- **Pay at the meeting or mail checks to:**

**Treasurer, Colleen Schmidt**  
5022 Woodcrest Dr.  
Yorba Linda 92886  
(714) 524-2659

**No later than Sunday, December 7, 2008**



## CAR BARN SPECIALS

*Member ads will run two months unless renewed. Non member ads will run one month unless renewed. All ads must be submitted in writing to: prhyland @att.net or OCMAFC Editors 244 No. Goldenspur Way, Orange, CA 92869-4422*

**Visit MAFCA's Web Site:**

[www.mafca.com/classifieds.html](http://www.mafca.com/classifieds.html)

**For Sale**

### FOR SALE: Lots of great items!!

Nearly new (6 mo old) 6 volt Motorcraft battery.  
\$60.00

Good used 6 Volt Model A starter with switch.  
\$50.00

Two Model A tail light lenses with built in LED lamps, both left and right side ( with resistors installed to work with regular flashers). Also two amber LED lamps that fit the front parking lamp sockets. A white LED lamp to fit the dash lamp holder on a 28 or 29. Flasher included. The complete set \$50.00

**Call Ed Heins @ 714-841-3331** 11/08

**FOR SALE: Misc Parts** I'm currently hot-rodding a 1929 Ford Roadster Pickup. I have a lot of parts that I won't be needing (eg: engine, extra engine parts, transmission, drive train, front axle assembly, wheels, steering column, radiator & etc).

If anyone is interested in any or all of these parts I would take any reasonable (even a low reasonable) offer.

If anyone is interested, I live in Pasadena, California and I can be reached at: [jcobbin@mac.com](mailto:jcobbin@mac.com)

**Jim Cobbin 626-390-6951** Thanks 11/08

### FOR SALE: 1931 Phaeton



It is dark green with light green wheels. It has 2000 miles on a new engine, has both top and side curtains and has been garaged.

**Call: Sally Smith @ 831-461-0685 (Santa Cruz)**

e-mail: [salduane@sbcglobal.net](mailto:salduane@sbcglobal.net)

Car can be seen in Beaumont-it is stored there.

Asking \$25,000.00 OBO

Thanks

10/08

### FOR SALE-"29" Std. Coupe.



Body off restoration, Model "B" engine & trans. Engine has counterbalanced crank, insert bearings, oil pressure, oil filter, alum. cam gear, hardened valve seats, stainless valves, adj. lifters. "B" carb. & dist. Float-a-Motor kit (front & rear), new black paint, wood grained inside trim. LeBaron Bonney interior, Firestone tires. Asking \$16,500

**Call-Ron Ryker 805-967-3572**

11/08



## General Meeting

7:30 PM

[Second Thursday of every month]

[Board Meeting at 6:00 PM]

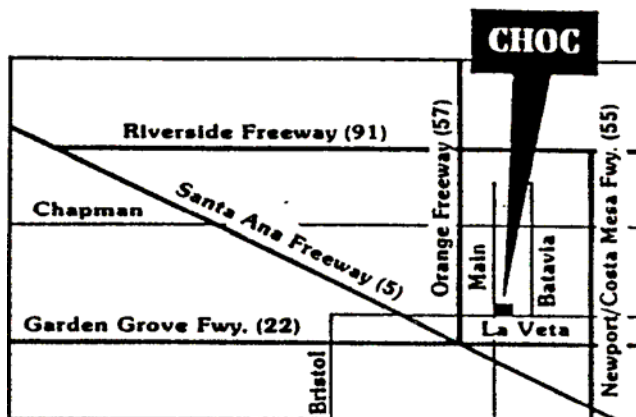
**November 13, 2008**

CHOC Hospital Complex

455 South Main St. Orange CA

From Main Street, turn east on to Providence Ave. and immediately, on your right, enter the structure and park on the second level. Meeting room is accessible from the parking structure.

- **Deadline for next *Distributor***
  - **November 30, 2008**
- Type or write all articles and advertisements and e-mail to: [newsletter@ocmafc.org](mailto:newsletter@ocmafc.org)  
Or 244 No. Goldenspur Way,  
Orange, CA 92869-4422



Post Office Box 10595  
Santa Ana, CA 92711

First Class Mail

Web Site: [www.ocmafc.org](http://www.ocmafc.org)



## BALLOT

☐ President: Mark Schwing  
or

☐ \_\_\_\_\_  
Write in Candidate

☐ Secretary: Alan Perlmutter  
or

☐ \_\_\_\_\_  
Write in Candidate

☐ Treasurer: Pam Heiland:  
or

☐ \_\_\_\_\_  
Write in Candidate

☐ Activities/Vice President: John Riggs  
( By appointment of the Board to complete  
the term of Don Miller ending Dec 31, 2009

Please note that the above members have  
agreed to the terms of office in the  
OCMAFCA for 2009-2010.

## BALLOT

☐ President: Mark Schwing  
or

☐ \_\_\_\_\_  
Write in Candidate

☐ Secretary: Alan Perlmutter  
or

☐ \_\_\_\_\_  
Write in Candidate

☐ Treasurer: Pam Heiland:  
or

☐ \_\_\_\_\_  
Write in Candidate

☐ Activities/Vice President: John Riggs  
( By appointment of the Board to complete  
the term of Don Miller ending Dec 31, 2009

Please note that the above members have  
agreed to the terms of office in the  
OCMAFCA for 2009-2010.

**Please complete your ballots, one per person,  
and mail to your club at:**

**P.O. Box 10595  
Santa Ana, CA**

**OR**

**Bring to the November 13, 2008 general meeting  
at the CHOC Hospital Complex. Please be sure and vote!!  
For further information please call Kathie McCall**



Please cut here

## MEMBER OF THE YEAR

☐ \_\_\_\_\_  
Please give a brief description in  
support of your recommendation

## MEMBER OF THE YEAR

☐ \_\_\_\_\_  
Please give a brief description in  
support of your recommendation