

“The Distributor”

Orange County Model A Ford Club

Our 51st Year



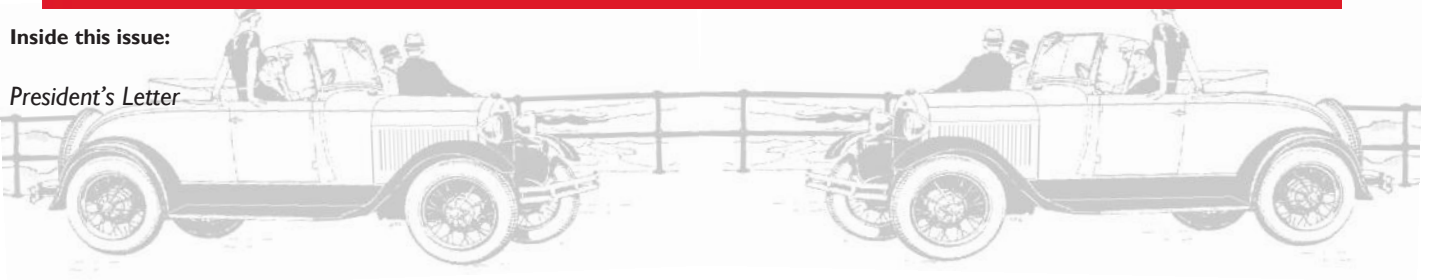
Editor: Tissy Smith-Hatcher

December 2012 Volume 52 Number 12



Inside this issue:

President's Letter



2012 BOARD MEMBERS

President – Richard Parrish

714-393-8582/rcp1937@aol.com

VP/Activities – Walt Otto

949-497-2858/waltotto@hotmail.com

Frank Mowrer

949-581-7621/frank25t@hotmail.com

Secretary – Frank Reese

714-970-6262/rftrust34@yahoo.com

Treasurer – Joe Goff

949-768-4627/joe@abt-tax.com

Technical – Rick Hall

714-282-0499/

rickandlouse@socal.rr.com

Editor – Tissy Smith-Hatcher

714-546-8554/newsletter@ocmafc.com

Immediate Past President –

Mark Schwing

714-970-1696/mschwing@earthlink.net

COMMITTEES

ACCC Representative –

Larry Conkol

714-535-1411

Breakfast Committee –

Terry Collings

714-970-7194/mtcollings@sbcglobal.net

Club Greeter – Doris Marshall

310-378-5061/dandd51@gmail.com

Election Chairperson –

Kathie Mc Call

714-633-0946/dkmcCall@socal.rr.com

Historian & Librarian –

Dick Smith

949-770-6847/modeladick@yahoo.com

Merchandise Director –

Cathy O'Brien

714-777-0771/ylgsrden@aol.com

Pancake Breakfast Setup & Coordina-

tion – Frank Reese

714-970-6262/rftrust34@yahoo.com

Raffle – Ed Cote

714-542-6161/patricia.cote@att.net

Refreshments – Colleen Schmidt

714-524-2659/dt_schmidt@sbcglobal.net

Regional Representative – SCRG

Carolyn Ratzlaff

714-529-5062/wadedon@pacbell.net

Scholarship Committee –

Joanie Harris

562-431-9630/trinkets6@verizon.net

Sheila Plotkin – 714-962-2117

Carolyn Ratzlaff

714-529-5062/wadedon@pacbell.net

Sunshine & Sorrow –

Jeanne Parrish

714-999-0611/jprp60@aol.com

Web Master – Chris Enright

949-481-8780/webmaster@ocmafc.com

Web Site Info Entry-TBA



President's Letter



This will be my last letter as president, so I will take liberties with length and comment on both last year and this year.

I thank you for allowing me to put my brand on the club these two years. It's now time to pass the gavel to our new president, Walt Otto to guide us way.

We have had opportunities to sample many tours of variety, technical seminars, 3rd Thursday breakfasts at varied restaurants and the 1st Saturday BS breakfast which was a constant at Nikko's for most of the two years.

We celebrated our 50th anniversary last year with a pancake breakfast including a river running through it and a raffle featuring prizes worth thousands of dollars. We celebrated with a luau with past members galore, Club Medallions, anniversary license plates and president's poker run that topped the mileage chart at 130 miles.

What a joy to see many new members fitting right in with us old folks and some kids and grand kids who make us old folks feel younger.

Food is a catalyst for the Model A crowd. Panera's is a popular kickoff point for the tours. Potlucks give us a chance to show off our favorite recipes like Kentucky Fried Chicken and pizza. Our banquet tops off the year with awards and, of course, eating and a libation if you choose.

Our treasury remains healthy and about what it was two years ago. We are fortunate our excellent treasurer Joe Goff has agreed to continue for another two years.

Vince Mariola, , left us last month on his last journey. We comforted

many on the loss of their relatives. We've seen several struggle back to health and return to active Model A activities.

The hard luck trophy has been particularly active these years and some months someone other than me received it.

In 2012, Rick Hall really cranked up the technical aspect of the club with meeting hints, in home assistance and monthly seminars on topics of safety and reliability.

If you are listening and participating you should have a dependable Model A on the road for the next tour. Not so? Ask for help.

After all these years in the club, I still see a vibrant club where you get out of it what you put into it. Numerous close friendships have been formed. People go out to eat, visit in each other's homes, work together on their cars and tour to other club meets together.

OCMAFC is truly a family not a club. We care. We share. We encourage and promote what is in our friends' best interest.

You are where you belong at the beginning of 2013, Right here in OCMAFC,

May we be blessed with insight and compassion for one another, and another year to live enjoying our OCMAFC family.

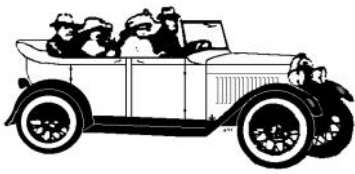
I'll see you at the banquet on Dec. 9th.

Merry Christmas & Happy New Year from Richard & Jeanne.

Swap Meets

Jan 26-27 Turlock 47th Annual Swap Meet hosted by the Modesto Area A's at the Stanislaus County Fairgrounds.

Feb 22-24 San Diego 47th Annual Big 3 Auto Parts Exchange at Qualcomm Stadium opens at noon on Friday, 8:00AM on Sat & Sun.



Activity Schedule

**NEXT MEETING:-See Page 12 for Map
January 10, 2013 (no December Meeting)**

Deadline for next Distributor is December 24th
Type or write all articles and ads and e-mail to:
newsletter@ocmafc.com or mail to
P.O. Box 10595 Santa Ana, CA 92711

2012 /2013

Tours/Activities Calendar



Dec 6 (Thurs) Board Meeting ~ will be held at Richard and Jeanne Parrish's home. All members are welcome.



Dec 9 (Sun) Installation Dinner to be held at the Tustin Banquet Center (see additional info and map on Page 4) Contact Kathie McCall to RSVP.



Dec 15 (Sat) Western Museum of Flight ~ Antique car show with Grand Marshal Santa in conjunction with Dick Smith and the history of

the Travelair. Torrance Airport, 3315 Airport Drive, Red Baron #3, Torrance



Dec 25 (Tue) Christmas Day Place a holiday wreath on your radiator and drive your Model A around the neighborhood. It will put a smile on everyone's face.

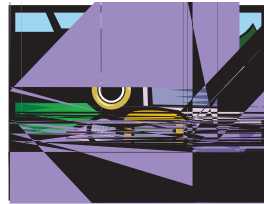


Dec 27 (Thurs) Fourth Thursday Breakfast Brunch ~ we will be meeting at 8:30 AM at a location to be determined. Info call Terry Collings (714) 970-7194

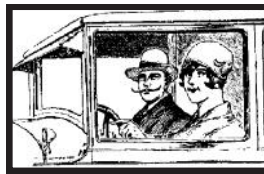
Carriage Club tour moved to the Irwindale Motor Speedway. More details as they become available. Lots of brass.



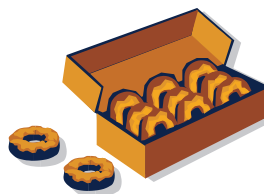
Jan 3 (Thurs) Board Meeting ~ meet your new Board and Committee members. All members are welcome.



Jan 5 (Sat) First Saturday Breakfast BS Session ~ 8AM at The Katella Grill, 1325 W. Katella Ave., Orange, CA (714) 997-9191



Jan 10 (Thurs) Regular Meeting Reminder ~ Please see last page for details. Come early to chat or even better join those of us that eat at Polly's Pies prior to the meeting, just south of the hospital on Main St. Guests are always welcome.



Jan 12 (Sat) Technical Seminar ~Tom Endy's garage at 10:00 a.m. this will be a seminar and work day to prepare a club member's car for touring. We will be changing

the tires and oil, perform a tune up, lube, brake adjustment and do a safety/maintenance check on the entire car. The process will take about four hours, so come to learn and help - stay as long as you like. The donuts will be gone by 10:15, coffee by 11:00. Lunch is on your own!

Want to talk about your Model A?

First Saturday Breakfast Scuttlebutt (BS) Session

January 5th 8AM

The Katella Grill

1325 W. Katella Ave.

Orange, CA (714) 997-9191



TECHNICAL TIPS

Clutch Adjustment Made Easy

Submitted by Rick Hall, Technical Advisor



Clutch adjustment is a necessary element of keeping your Model A in good working order. The process, however, can be a frustrating pain in the butt! Keep reading - help is on the way.

There should be one inch of “free travel” when you push on the pedal before it begins to disengage the clutch. Over the miles, the clutch plate will wear and free

Orange County Model A Club General Meeting Minutes, CHOC Hospital

LOCATION: CHOC Hospital

DATE: Thursday, November 8, 2012

67 Members and guests in attendance

Meeting called to order by President Richard Parrish at 7:42PM. Flag salute was led by Rick Hall.

Club Greeter: Doris Marshall introduced our visitors: David Knapp who lives in Lake Forrest and has a 1931 Woody station wagon. He also joined our club. Welcome aboard David. Tom Weaver, a past member and Bob Carlson who has a 1929, Tudor Model A and has owned it for 48 years. He is looking for a garage to rent or sell his car. As always Doris humored us with several of her jokes.

Secretary: Frank Reese asked for approval of October meeting minutes. They were approved by Sheila Plotkin and seconded by Drain Marshall.

Pancake Breakfast: Frank Reese asked for club approval of the pancake breakfast at Hart Park in the City of Orange.

A show of hands was unanimous. We will follow through with meetings with the City of Orange officials. The Fire Marshal does not want any type of fire under the wood structure. The city will be building new tables out in the open, adjacent to the wood structure and hopefully completed by late March or April.

Treasurer: Joe Goff gave a financial report of the club. Joe passed out the 2013 budget, which was approved by the membership.

Technical Director: Rick Hall announced the next tech session will be held at Tom Endy's home. The subject will be on "How to Rebuild the Model A Water Pump". The session will be conducted by Wayne Wiedle. If you purchase a rebuild kit and bring your old water pump, you can learn how to rebuild on the spot. The session will start at 10:00 AM on Saturday, November 17, 2012. Coffee and donuts furnished.

Activities: Frank Mowrer discussed the tour of the USS Iowa. The attendance was 24 members and 9 Model A's. Frank took a picture of the Model A's parked along side of the Battleship and passed it around to the members. Great picture Frank. Everybody loved the tour. Next tour will be to Mount Baldy on November 10, 2012. Don Ratzlaff will be the tour leader. He explained the meeting place, the route and the time schedule. Activities Director Frank Mowrer wants tour mileage chart sign-ups for 2012. If any questions, call Frank.

Raffles: Don did the membership raffle. The name drawn was Kevin and Kathleen Schaner. They won \$30. The raffle for January will start back at \$10. Ed Cote did the club badge raffle. Normally it would be for \$5, but Ed inadvertently passed out two different colored tickets, so he decided he would donate another \$5. The first raffle was won by Eileen Schwing, with the second colored ticket won by Kathy McCall.

Annual Banquet: Kathy McCall said we have 70 signed up for the banquet on December 9, 2012.

Election: Chairperson Kathy McCall mentioned 2 ballots per family (husband and wife) are allowed to vote. You may make copies of the ballots since only one was printed in the Distributor.

General Meeting: No general meeting in December. There will be a short December meeting at banquet before the festivities begin.

Sunshine and Sorrow: Jeanne Parrish named several families recovering from illnesses. Vince and Joan Mariola, John and Dorothy Knox's son David, Jerry Mead, Doris and Drain Marshall's son, Don and Sally Miller and Walt Otto's father-in-law. Our sincere prayers and condolences to them. Keep them all in your prayers.

Hard Luck Trophy: The trophy was passed from Richard Parrish to John Knox.

Merchandise: No report.

Refreshment Director: Colleen Schmidt is retiring. The club needs someone to step up and take over. It could be several people working together and trading off. Colleen thanked everybody for helping and supporting the club meeting refreshments.

Miscellaneous: Don Ratzlaff was telling a story about a club friend's business that had a fire. The fire destroyed a good part of the business and 2 cars. The fire started in one of the customer's car. Don told us, if the customer would have had a battery cut-out switch on his car, there would not have been a fire. Everybody should check into adding a battery cut-out switch to their car to avoid a possible fire in the future.

White Elephant Auction: The auction was presented by Bev Marsh and auctioned by Ed Cote with the assistance of Drain Marshall and went over well. The auction was stocked by members bringing in things they did not want or could not use anymore. The money raised went into the club treasury. It looked like everybody enjoyed it. Good job Bev, Ed and Drain. Thanks to all the item contributors.

Fourth Thursday Breakfast: There will be no 4th Thursday breakfast due to Thanksgiving holiday.

Respectfully submitted by Frank Reese
Temporary Secretary





MODEL A FORD FOUNDATION, INC. (MAFFI) MUSEUM

Recently, the 1903 Ford Model A on loan for one year was delivered to your museum. This interesting car will illustrate the very early efforts of Henry Ford to build the perfect car for America. It is being displayed with the Model T touring car to illustrate the differences between the preceding car model, the T, and the A along with the old original Model A.

Within 3 weeks delivery, a Coupe, Sedan Delivery, Postal Truck and a Fodor will bring our inventory up to a somewhat fill status. Work on positioning and building of displays is in progress. Scheduling the arrival of the donated vehicles from across America has been a real juggling act. As you are aware, your museum has not paid staff so all this work being completed is provided by local volunteers. A major work party consisting of board members and the same local volunteers took place the first week of November.

If you are not yet a member, you can join MAFFI online. MAFFI members can present their membership card at the door of the Gilmore Museum Complex for free entry. The Gilmore Museum Complex is a must see. I personally visited 15 car museums this year, including the 5 individual museums at the Gilmore and found nothing

to compare with the Gilmore Complex.

The question was asked at the Sonoma A's October meeting if one could still order a personalized brick? The answer is yes. However, orders are grouped together in a group of 200 bricks to be cost effective. At present there are 200 or so bricks waiting for spring to be put into place. I am happy to report that we have sold over 900 bricks so far. The main walk area is filling up with the afore bricks; we only have room for approximately 200 bricks in the main walk and service station drive. At some point in the future, another area will have to be used for your personalized bricks.

The owner of the 20,000,000 Ford (a Model A) has been in discussion with us about the possible display of his vehicle. Many of you saw his car running around at the MAFCA Convention this summer.

The Museum is looking for NOS (new original stock) parts for display in the service area, if you have an item or items you would like to donate please contact Steve Ribeau. Thank you for your support. Your museum appreciates it very much.

Products and Suppliers

By Steve Ribeau

I am now in contact with manufacturers and suppliers in my role as a Board Member of MAFFI seeking financial support for the Museum. In addition, I will be introducing various manufacturers to the Model A community to perhaps gain their support for the museum. As I find new and interesting things, I will pass them on to our club membership.

While in Detroit on our way to Hickory Corners (the museum site), we stopped off to see a small and somewhat unknown supplier that provides some very interesting items. Roy Nacewicz Enterprises is the leading supplier of nuts and bolts to the Early Ford restorer. If you are in need of authentic fasteners for your 1928-1953

Ford, Roy has them. He manufacturers (or has them made) to the original Ford drawings, right down to the absolute correct finish or plating. Roy was a long-term Ford Motor Company employee and has been able to obtain the spec's and drawings for all the fasteners.

Through the Ford records, he was able to track down the original supplier to Ford of the embossed welting used in the early Fords. He purchased the embossing rollers and now produces the exact same welting that Ford used. The core material comes from the same factory that supplied it to the embossing company. You can contact Roy at 734-654-9450 or by phone at 734-654-9450.



By: Esther Goff



WOW!!! What a trip and what a gorgeous day!!! Our trip to Mt. Baldy was breathtaking. There were 6 Model A cars and they climbed the hills and dales up to 5,000 feet without any problem. We also

had two moderns. We cruised at about 30 mph and the curves were very gradual. Each curve and view was more spectacular than the previous one. The engineering of this highway is truly mind boggling.

We met at Panera Bread bright and early for a light breakfast, and our 1st pit stop was a McDonalds, of course! Then we topped off for gas at a Costco in Glendora. There were many lovely homes/estates to gawk at as we approached the climb.

Mother Nature was in all her glory with the colorful autumn foliage blanketed against the deep blue sky with a couple of fluffy cumulous clouds. The back drop was the snow on Mt. Baldy.

We encountered many enthusiastic skateboarders and cyclists, in droves, while climbing the mountain road. Where do they get the stamina? Determination? We had to keep a watchful eye out for them as they went uphill, through the "s" curves, and then downhill at a high speed. There is only one lane in each direction.

At the restaurant, we had a humongous feed of really good food. The Mt. Baldy restaurant is just below our crest of 5,000 feet. The place was packed. (What is this about the economy needing help?) We spoke to some of the bikers and were exposed to a whole new sports world. Did you know that mountain bikes have thin tires and are what you mostly see on the road and that wide tire bikes are dirt bikes and are usually used on dirt paths? There were also a fair share of Harleys. All the riders asked many questions about the A's, and oohed and aawed! Art & Olive Moore met us at the Mt. Baldy restaurant for lunch.

On the way home, we stopped at Art & Olive's home. Another treat! They have this huge tortoise, "Cleo" that is 8 years old and weighs about 80 pounds. Did you know that a tortoise lives on land and turtles need water? The envy for all the guys was Art's oversized four car garage with an extra high vaulted ceiling for the lift that Art uses to remove engines. I think they would sell us (their wives) for one like it! Art has four old cars, plus there are two racing cars for hill climbing. Art's racing car is yellow and Olive's car is purple. They both love hill climb racing!!

Those of you who did not make this trip truly missed an adventurous day with a lot of camaraderie. (Photos →)

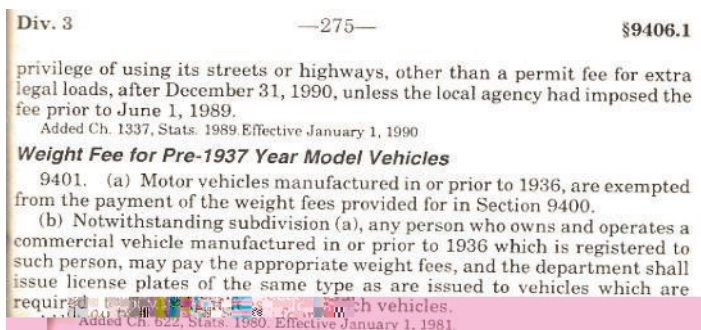
California DMV Truck Exemption

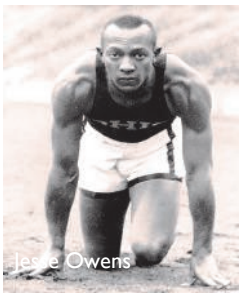
by Tom Endy

here is an obscure California vehicle code that exempts Model A pick up trucks from having to be weighed and issued commercial license plates. In fact any pre-1937 vehicle is exempt under the law. The problem is that most DMV clerks are not aware of the vehicle code and will insist that a Model A pick up (delivery van or AA truck) must be weighed and issued commercial plates, which is a higher fee. It then becomes necessary to bring the clerk's attention to the vehicle code.

Below is a copy of California 9401. Note that the double talk in part (b) is saying that if the owner of a pre-1937 truck wants commercial license plates, for whatever reason, the DMV will oblige them.

It is also a good idea to clip a copy of this vehicle code to the registration slip of any Model A pick up, delivery van, or AA truck registered with passenger vehicle license plates.





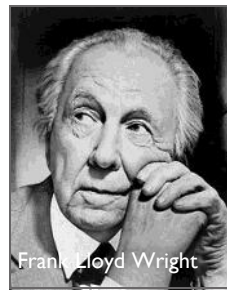
Jesse Owens



Clark Gable



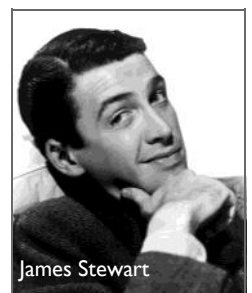
Eleanor Roosevelt



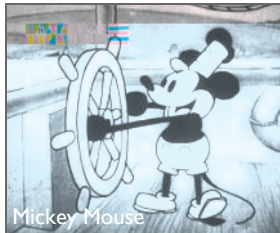
Frank Lloyd Wright



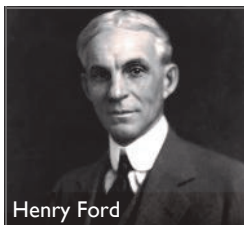
Amelia Earhart



James Stewart



Mickey Mouse



Henry Ford

1929 WILL BE A BUSY YEAR

Population: 123,188,000 in 48 states

Life Expectancy: Male, 58.1; Female, 61.6

Average salary: \$1,368

Unemployment rises to 25%

Car Sales: 2,787,400

Food Prices: Milk, 14 cents a qt.; Bread, 9 cents a loaf; Round

Steak, 42 cents a pound

Lynchings: 21

Dow Jones reaches all time high at 381.17, followed shortly by the Crash of 1929

Illiteracy rate reaches a new low of 6% of the population

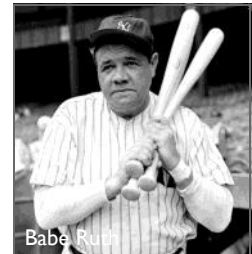
It takes 13 days to reach California from New York as there are 387,000 miles of paved roads

"Buck Rogers" and "Tarzan" comic strips appear

Rudy Vallee records "Deep Night"

First telephone installed in the White House

Louis Marx introduces the Yo-Yo



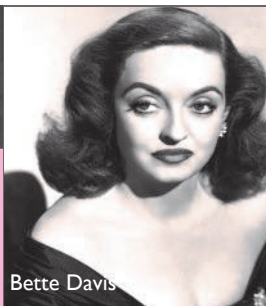
Babe Ruth



Lana Turner



Lou Gehrig



Bette Davis



Spencer Tracy



Georgia O'Keeffe



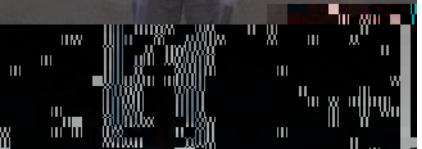
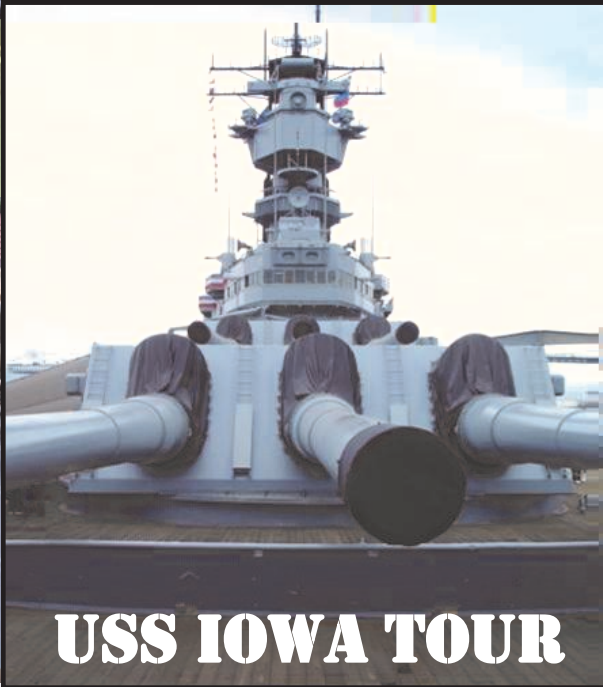
Herbert Hoover



Shirley Temple



**What happens at the Saturday BS Breakfasts??
FUN, FOOD AND LOTS OF SHARING!**





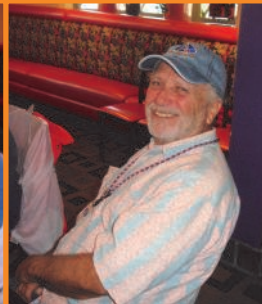
Want to get your newsletter in COLOR?

Just ask that the _____ be sent via email. Saves the club the postage, lets you to print in black & white or color and allows you to email to your friends and family.

FOURTH THURSDAY



**B
R
E
A
K
F
A
S
T**



Monthly Roster Drawing \$\$\$

Excitement ran high; the prize was to be \$30; that's a year's membership! A card was drawn, and the call-out was for Kevin and Kathleen Schaner! From the back of the room a response was heard; "I'm here, I'm here"! And so it was that Kevin happily collected the \$30 prize. The rest of us grudgingly congratulated Kevin but, secretly we were hoping it would roll-over to a bigger prize for the next drawing in January See you there and hoping your name is called.

Our Newest Members

1. **David J. & Barbara Knapp**
25531 Loganberry Lane, Lake Forest, CA 92630
(949) 243-5210/1931 Station Wagon
2. **Larry & Shirley Dowell**
2406 Calle Monte Carlo, San Clemente, CA 92672
3. **Thomas D. & Janis M. Weaver**
2513 Forest Lake, Santa Ana, CA 92705
(714) 637-0227/1931 Model 68B Cabriolet
4. **Ti & Karen Heer**
12 Mountain Laurel, Irvine, CA 92604
(949) 651-9803/1928 45-A Coupe
Email: Theer10@gmail.com

Welcome



It is with great sadness we must report that Vincent J. Mariola, 87, passed in his sleep on 11/9/12. He had not been well for some time. Vince was a long time member of the OCMAFC and the proud owner of a beautiful 1931 Model A Phaeton.

Vince was born in Painesville, Ohio and attended St. Martha's, graduating from North High School. He owned a small grocery store in downtown Akron until 1962 when he moved to California.

He is predeceased by his parents, Mary and Anthony Mariola; and his eldest daughter, Theresa. He is survived by his wife, Joan; son, Mark (Thomasine); daughters, Diane Deeks (D'Arcy) and Christine Snow (Ted); six grandchildren; nine great-grandchildren; and one great-great-grandchild and many family members in Ohio.

Vince enjoyed being referred to as the "Godfather" and that will be how we will remember him. Services were held at Fairhaven Memorial Park on 11/15/2012.

We appreciate his contributions to the Orange County Model A Club over many years.

**Quick & Easy!
Isolating an Electrical Fault**

By Tom Endy

Most Model A owners today have installed a fuse mod on the top of their starter. This is certainly a prudent thing to do; a blown fuse is much better than having a fire in the car.

Once a blown fuse has occurred, the next step is to determine where the short circuit exists that caused it to blow. This can be accomplished rather quickly by a method of isolation. There are three areas on the car where a short circuit is most likely to occur.

1. In the light bail located at the bottom of the steering column, which consists of all the switching circuitry for the car's lights. This is the most common fault area.

2. Inside the terminal box located on the firewall where a number of connections come together and can easily short out against the armored ignition cable.

3. Behind the dash panel where connections to the ammeter and dash light are located that can easily short out against the dash. The first effort to isolate the fault

is to unhook the three wires attached to the terminal post on the cutout switch, which sits on top of the generator. If you have an alternator the three wires are attached to the output terminal post of the alternator. Disconnect the three wires and spread them out so they don't touch anything.

One of the three wires comes from the terminal box on the firewall and provides battery power. A second wire runs down to the light bail, and the third wire goes off to the ahooguh horn.

Install a new fuse. If it does not blow you have eliminated the terminal block on the firewall and the dash panel as the culprit. If there is a short in either of these two places it would have blown the new fuse. Next connect the wire from the terminal block to the wire that runs to the ahooguh horn. If the fuse does not blow you have eliminated the ahooguh horn. Next hook these two wires back onto the terminal post of either the cutout or the alternator. If the fuse does not blow you have eliminated the cutout, generator, or alternator. This leaves only the light bail as the likely culprit.

Inside the light bail is a rat's nest of wires and switch contacts that could be oil soaked from a leaking steering box. If the light bail assembly is a poor quality repo, chances are there are wire whiskers and poor connections involved. If you are out on the road it is best to fool with further trouble shooting of the light bail at home. You can drive the car with the light bail wire disconnected. Just keep in mind you won't have any lights, including brake lights.

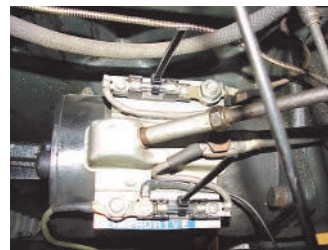
If a new fuse blew when you installed it after disconnecting the three wires from the cutout, the fault is likely in the terminal block on the firewall or behind the dash panel, and not in the light bail, ahooguh horn, cutout, generator, or alternator.

Start with the terminal box. Remove the cover and inspect for loose and shorting wires. A poor quality repo terminal box can also have one of the terminal threaded shafts shorted out behind the box. It is possible for the threaded shaft to back off and touch the firewall.

If the terminal box appears to be ok, remove the dash panel and inspect for loose and shorted wires on the back of the ammeter.

If you follow this procedure you will quickly locate the fault 95% of the time. However, a subtle electrical fault could possibly be lurking somewhere else that may not be as obvious.

(Continued Next Column)



This particular Model A has a second fuse circuit to accommodate a Borg Warner overdrive. The tie wraps are to provide a means to easily remove the fuses when the car is not in use.

CAR BARN SPECIALS

Member ads will run two months unless renewed. Non-member ads will run one month unless renewed. All ads must be submitted in writing to: OCMAFC, P.O. Box 10595, Santa Ana, CA 92711 or by email to newsletter@ocmafc.com

For Sale

1931 Ford Model A Rumble Seat Deluxe Cabriolet, black with green wheels, tan top and upholstery. A beautiful vehicle. Contact Gene at 928-667-7289 or 714-514-3329. \$22,000



As happens now and then, a long time Model A hobbyist decides to reduce his inventory! Such is the case for Richard Nordin of Brea. He has a garage full of model A parts for sale. Ranging from a running chassis to the nuts and bolts required. If you are looking for a particular item chances are he has it. You can set up a visit by calling Richard at: 562-694-2672.

Model B engine for sale Just completed major overhaul. Modified for installation in a Model A. Many new parts. Running on my engine stand. Runs great, looks beautiful. Long block \$3,000 firm. Engine accessories extra. Prices negotiable. I can deliver it to SoCal as I'm going to San Diego for Christmas. Call Glenn Johnson at (530) 644-1250, gsleasing@sbcglobal.net



Deadline for next *Distributor*

December 24, 2012

Type or write all articles and advertisements and e-mail to: newsletter@ocmafc.com
Or mail to: P.O. Box 10595, Santa Ana, CA 92711



General Meeting

7:30 PM

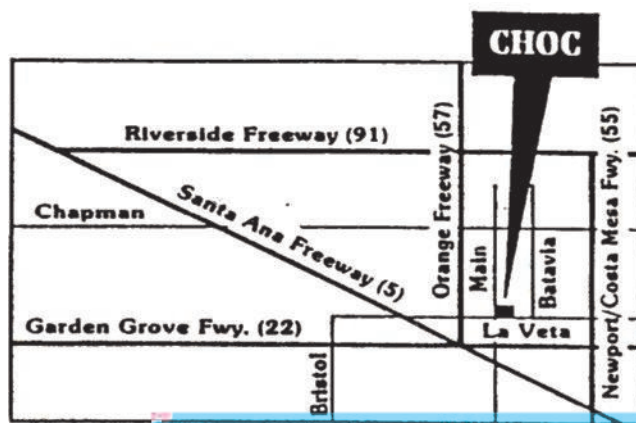
[Second Thursday of every month]

January 10, 2012

CHOC Hospital Complex

455 South Main Street, Orange, CA

From Main Street, turn east on to Providence Ave. and immediately, on your right, enter the structure and park on the second level. Meeting room (Conference Rooms A & B) is accessible from the parking structure.



Post Office Box 10595
Santa Ana, CA 92711

First Class Mail

Web Site: www.ocmafc.com